

# MASSO

## USB Socket Layout

It has come to our attention that our upgraded USB sockets on the MASSO Touch are holding USB Flash drive drives tightly and makes removal difficult.

The new socket has thicker metal and stronger tabs to better secure loose USB Flash drives however, with the standard MASSO Touch screen case design there is not enough room for the securing tabs to open and release the USB Flash drive.

As we are aware of this there have been steps taken to improve our product as a whole and as part of this process we have supplied you with the new thicker USB socket with improved, stronger tabs and as to facilitate this upgrade we need to make room for the tabs in the case.

### Before You Begin

- Check that the USB socket circuit board version is **v1.3** as these changes are only required for **v1.3**.





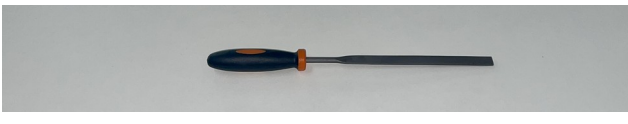
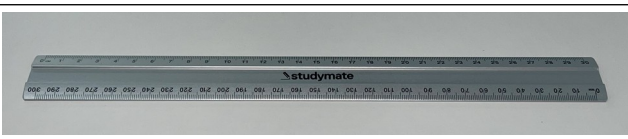


Check version here

- Read these instructions and check to be sure all parts and tools are accounted for.
- Please retain these instructions for future reference.

# MASSO

## Tools Required

<ul style="list-style-type: none"><li>• Safety glasses.</li></ul>	
<ul style="list-style-type: none"><li>• 4mm Allen key.</li></ul>	
<ul style="list-style-type: none"><li>• No. 2 Phillips screw driver or 5mm (7/32 of an inch) flathead screw driver.</li></ul>	
<ul style="list-style-type: none"><li>• Pencil.</li></ul>	
<ul style="list-style-type: none"><li>• Round or Rectangular needle file 1.5mm / (1/16th of an inch) thick approx.</li></ul>	
<ul style="list-style-type: none"><li>• Rule or other measuring device.</li></ul>	

## Instructions

### Preparation

1. Turn off controller.
2. Ensure your environment is generally dust free.
3. Ensure you ground yourself on the back of the enclosure before starting.
4. Give yourself a clean and clear work area.

### Open enclosure

1. Using the 4mm Allen wrench remove the 4 bolts from the front face.
2. Retain the screws.
3. Hinge open the enclosure using the hinges on the left side of the display.



### Remove Keeper Screws

1. Using the No. 2 Phillips or flathead screw driver remove the 2 cap screws holding the USB keeper.
2. Remove and retain the screws and the USB keeper.



# MASSO

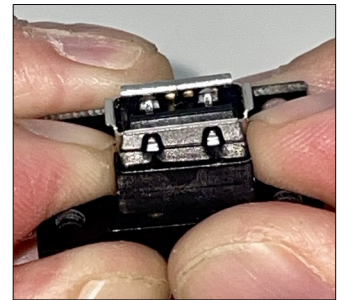
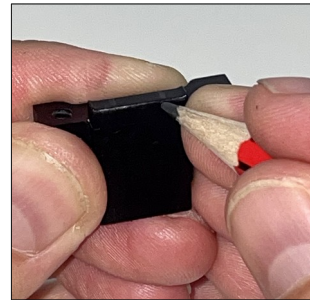
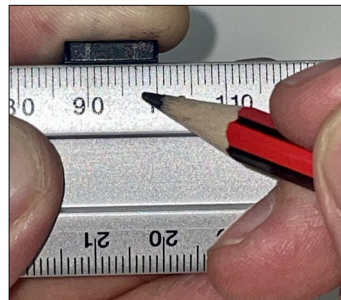
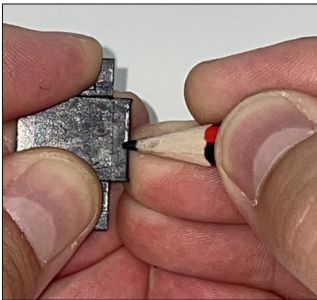
## Slide out USB Socket

1. Slide out the USB socket.
2. Hang USB socket inside the enclosure to keep it from hanging by its wires.



## Mark the Keeper

1. Using the Pencil, mark a line along the edge that touches the USB socket approximately 0.4-0.5mm (1/64th-1/32nd of an inch) to a maximum width of 1mm.
2. Place a mark 3mm (1/8th of an inch) from the edge of the keeper on the surface that contacts the USB socket.
3. Inspect the marks against the USB socket tabs.



# MASSO

## Notch the Enclosure and Keeper

1. Using the Pencil, mark a line along the edge that touches the USB socket approximately 0.4-0.5mm (1/64th-1/32nd of an inch) to a maximum width of 1mm.
2. Install the marked keeper into the enclosure .
3. Using the marks as guides, mark the notch locations on the enclosure.
4. Using the needle file or similar, file in the notches with a maximum width of 1mm and a maximum depth of 0.5mm.
5. Compare the notches against the USB socket tabs.





# MASSO

## Install USB Socket

1. Slide the USB socket back into the notched enclosure.
2. Slide the notched keeper into position against the USB socket.
3. Ensure the flange on the USB socket is showing the whole way around the edge.
4. Install the 2 keeper retaining screws tighten them gently, they are designed to hold the keeper in place as the enclosure is opened and closed rather than retain the USB socket.



## Close Enclosure

1. Route the wires along the inside of the front of the enclosure and ensure the wires will not be trapped by the hinge.
2. Hinge the enclosure closed.
3. Install the 4 bolts in the face of the enclosure tightening to hand tight.

## Testing

1. With all the screws back in place, install and remove the USB Flash drive ensuring there is a moderate amount of force required.
2. If removal is still difficult please deepen the notches.



## Instructions feedback

Please submit feedback on the instructions to [support@masso.com.au](mailto:support@masso.com.au) noting this document version number.